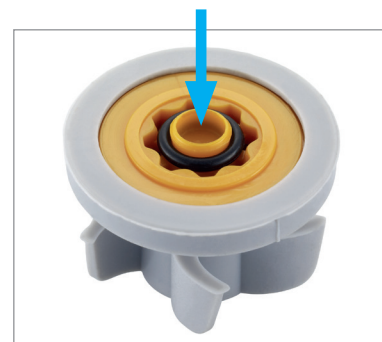


PCW-02 1/2" Washer Regulators Metric Flow Rates

PCW-02 1/2" washer regulators are flow regulators with an added sealing function. Made for retrofit, they are kept in place in shower handles, bib taps or shattafs by means of a flexible turbine washer which replaces the usual washer. The flexible silicone washer fits bore diameters from 11-15 mm and ensures secure positioning in any threaded 1/2" connection.

The PCW-02 flow regulator must be inserted into the application with the turbine first and tightened with a torque of 2 Nm max. Observe the direction of flow.



PCW-02 1/2" washer regulator

Materials used

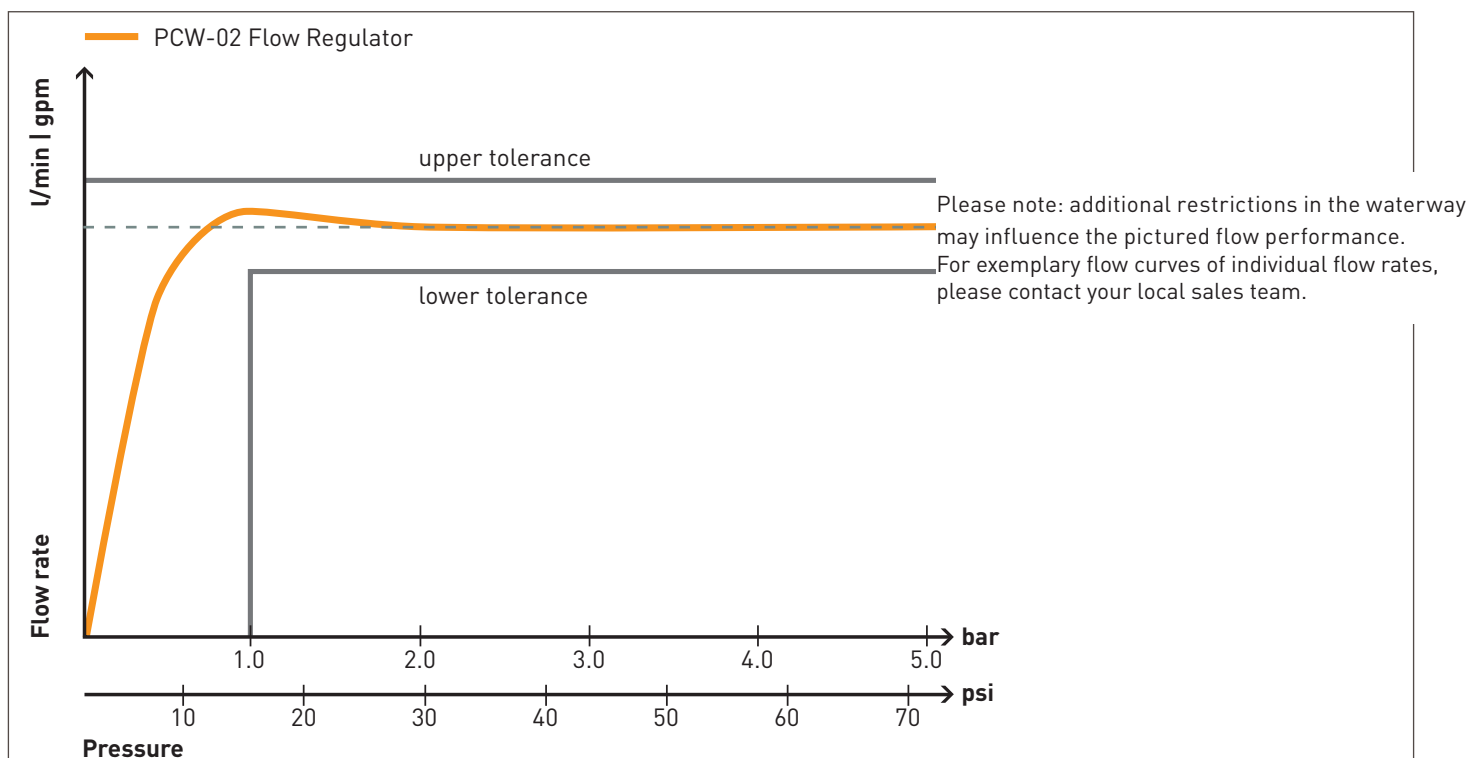
Housing: POM
O-ring: EPDM
PCW washer: silicone

Model Overview

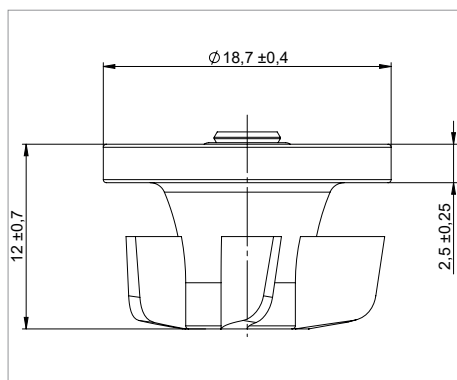
PCW-02 Washer Regulators

Model / Flow rate	Color Code	Part no. PCW-02	Flow tolerance (in %)	Pressure range (in bar)
PCW-02 1/2" 2.0 l/min.	olive	58.9085.100	+30 / -30	1.0 - 10.0
PCW-02 1/2" 3.0 l/min.	brown	58.9095.100	+30 / -30	1.0 - 10.0
PCW-02 1/2" 4.0 l/min.	dark grey	58.9086.100	+20 / -20	1.0 - 10.0
PCW-02 1/2" 5.0 l/min.	yellow	58.9087.100	+20 / -20	1.0 - 10.0
PCW-02 1/2" 6.0 l/min.	black	58.9088.100	+10 / -10	1.0 - 10.0
PCW-02 1/2" 7.0 l/min.	light green	58.9089.100	+10 / -10	1.0 - 10.0
PCW-02 1/2" 8.0 l/min.	natural white	58.9090.100	+10 / -10	1.0 - 10.0
PCW-02 1/2" 9.0 l/min.	orange	58.9091.100	+10 / -10	1.5 - 10.0
PCW-02 1/2" 10.0 l/min.	light blue	58.9092.100	+10 / -10	1.5 - 10.0
PCW-02 1/2" 11.0 l/min.	brown	58.9093.100	+10 / -10	1.0 - 10.0
PCW-02 1/2" 12.0 l/min.	red	58.9094.100	+10 / -10	1.5 - 10.0
PCW-02 1/2" 15.0 l/min.	lime green	58.9096.100	+10 / -10	3.0 - 10.0

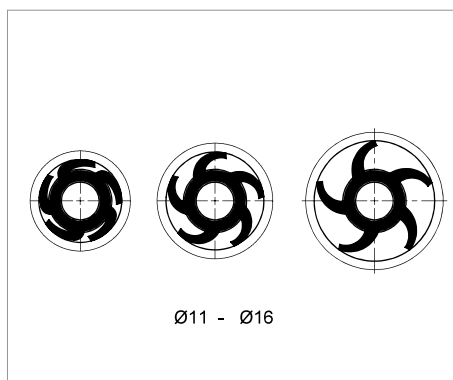
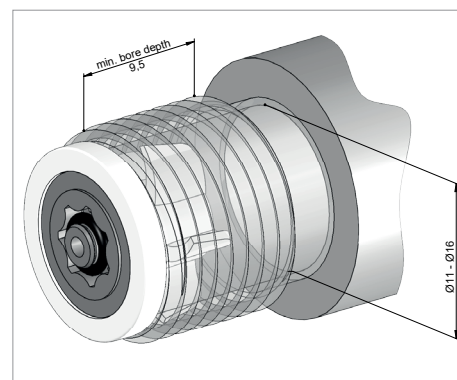
Flow Curves



Dimensions (in mm)

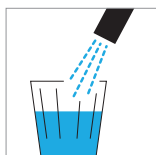
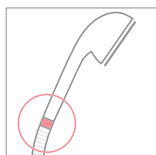
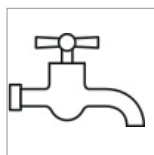
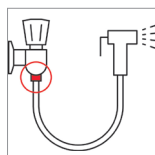


PCW-02 1/2" washer regulator

Suitable for bore diameters
from 11- 16mm

Recommended Mounting Dimensions

Intended Use

Drinking
water onlyShower
handlesBib taps/
Wall spouts

Shattafs

Assembly Instructions

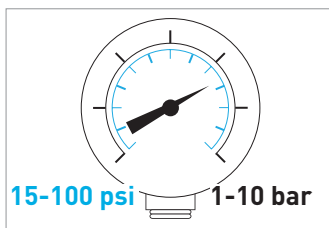
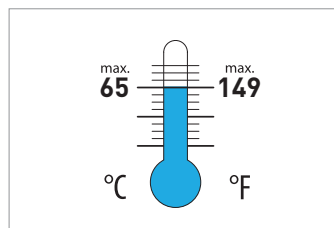
ATTENTION!

Product may not be altered!
May not be used for hot water application exceeding 70°C

ATTENTION!

Max. mounting torque 2.0 Nm

Operating Conditions



Indicated pressure values refer to supply line pressure.
Avoid water hammer.